


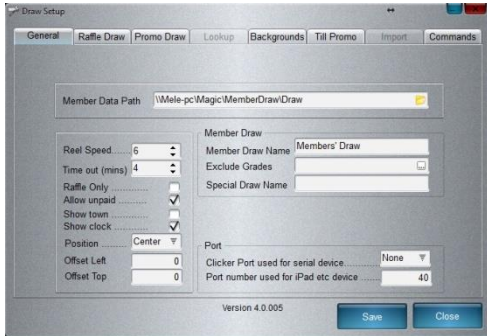
Computer Magic

Members' Draw & Raffle Draw

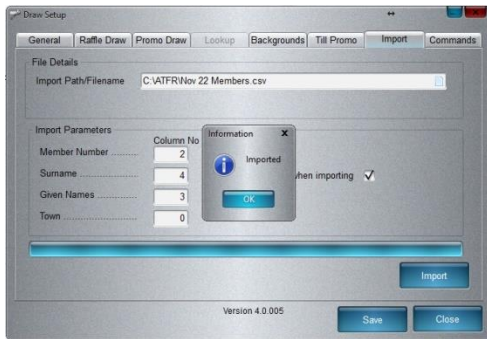
Guide

On Computer displaying in-house channel (Base Computer):

- If Slideshow is running press ESC on keyboard to stop the Slideshow.
- Double-click MemDraw Setup icon 



- Setup shows data path and parameters which, once set, should not need to be altered.
- The draw name can be edited here.
- If using a .csv file from third party Membership provider select 'Import' from the menu (even though it is greyed out).



- In the Import Path/File name field ensure that the most recent dated file is selected (from the C:\\Atfr directory).
- Do not change Import parameters.
- Select 'Import' and wait until 'Imported' message is displayed.
- Click OK and then SAVE before exiting the program.

- Double-click the Member Draw icon as shown –

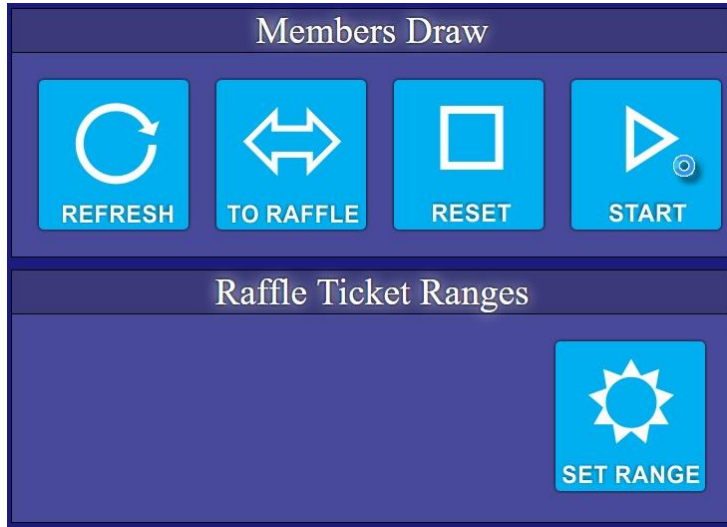


- The Members Draw screen should be displayed.
- The PC is now setup ready for the Badge Draw and Raffle.



On the Tablet (or iPad):

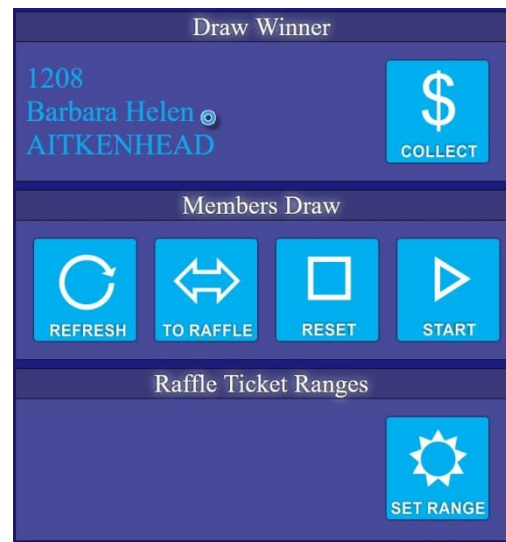
- Ensure the iPad is connected to the club’s secure wireless network, NOT a Public Wi-Fi, (if not you will need the SSID password).
- You will need the IP address of the Base Computer to connect from the tablet.
- On the tablet start the web browser and in the address bar type <http://192.168.0.24:40> (substituting the address with your base computer’s IP address – note that “:40” is the port for the tablet connection to the base computer so it must be included at the end of the IP address).
- The following screen should be displayed:



- On your tablet select “Save to Home Screen” to create the Badge Draw shortcut on your tablet.
- On the iPad select the Member Draw icon:



- To run the Badge Draw just select ‘START’ – ensure you press with the pad of your finger.
- The Member drawn will be displayed on the TV screens and on your iPad:

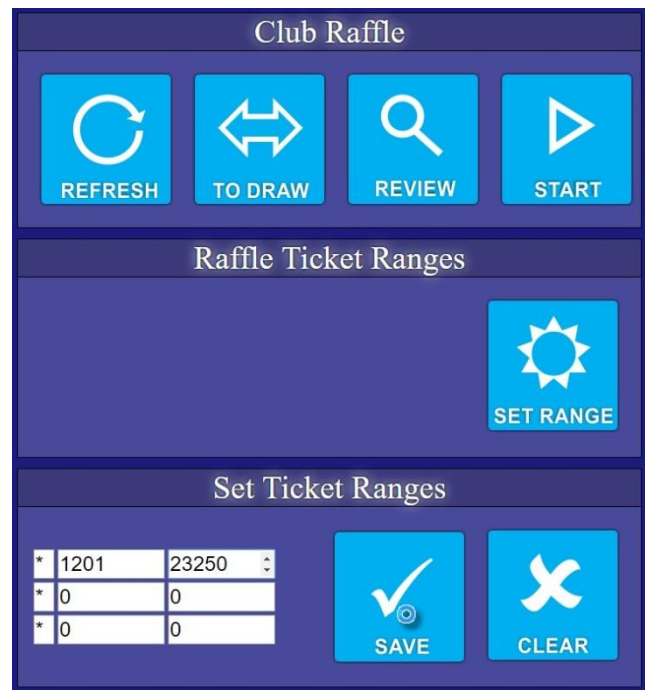



- A clock on the TV screen will show the 4 minute countdown for the Member to present to claim the jackpot.
- Once the time has elapsed select RESET on the iPad.
- If another draw is required press START again.

- To change from the Badge Draw to the Raffle Draw select the TO RAFFLE button on your tablet.



- The Raffle screen will now be displayed on the TV's.
- Select SET RANGE to insert the start and end numbers for your raffle.
- If using pre-printed ticket strips you can use split number sequences by placing start and finish numbers in the additional two boxes.
- A letter can be placed in the first box but normally this is left blank.
- Ensure you select SAVE once your number range is entered.
- Press START to commence your raffle draw.
- At the end of the raffle you can press REVIEW if you wish to display a scrolling list of all numbers drawn.



- Once completely finished press the Home button on your iPad to close the program on the tablet.
- On the Base Computer press ESC on the keyboard to exit the Member Draw & raffle program.
- Generally you would then double-click the Slideshow icon  to set the in-house advertising running on the TV system.